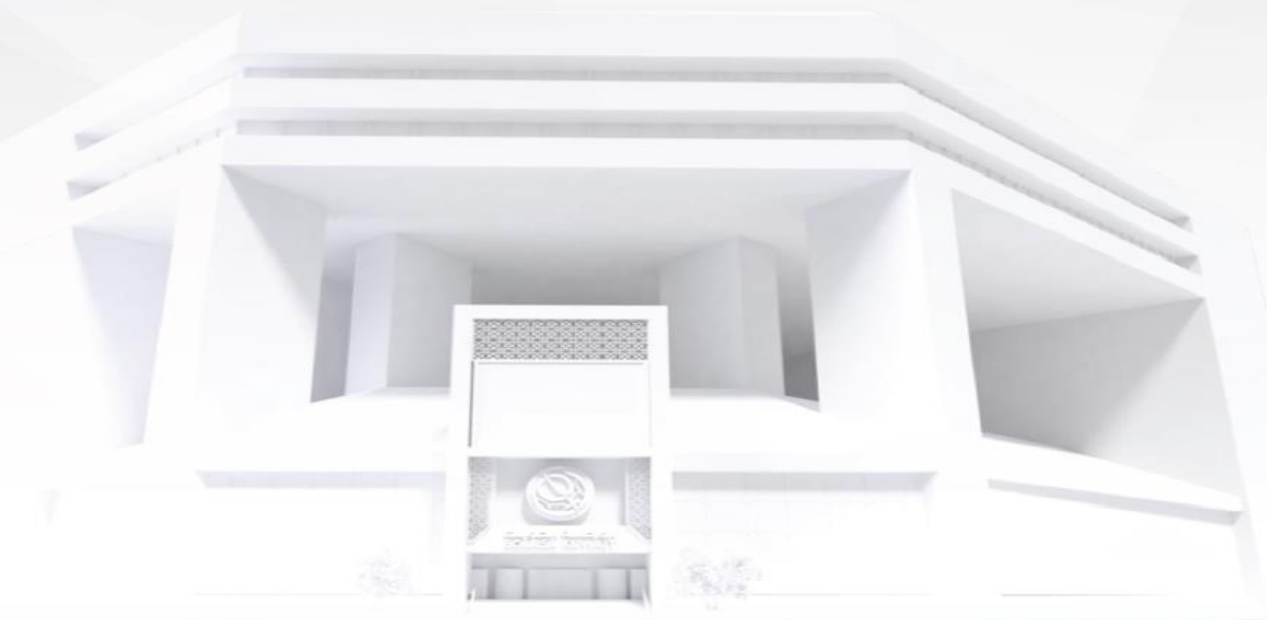




شركة الاستثمار الوطنية
NATIONAL INVESTMENTS COMPANY

Bursa Kuwait – Daily Market Report MENA Securities – Research & Studies Dep.

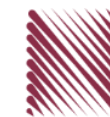
06th November 2022



www.nic.com.kw

DAILY MARKET COVERAGE REPORT

NIC MENA SECURITIES - RESEARCH AND STUDIES DEP



Kuwait Market Watch

Sunday, November 6, 2022

Index	Close	DTD Chg Net	DTD (%)	YTD (%)	52W High	52W Low	MKT CAP Bn (KD)	PBV (X)	PE (X)	DY (%)
All Share Index	7,426.44	61.25	0.83%	5.44%	8,472.15	6,788.83	44.08	1.94	32.10	4.10
Premier Index	8,319.75	78.55	0.95%	8.91%	9,437.37	7,343.90	34.80	2.15	32.86	4.56
Main Index	5,548.99	18.53	0.34%	-5.73%	6,600.62	5,190.37	9.28	1.18	29.27	2.39
NIC 50 Index	9,318.21	91.87	1.00%	9.34%	10,553.82	8,195.69	34.10	2.15	32.86	4.56

Index	Value Mn(KD)	Volume (Mn share)
All Share Index	56.69	213.48
Premier Index	44.25	96.95
Main Index	12.44	116.53
NIC 50 Index	56.51	199.65

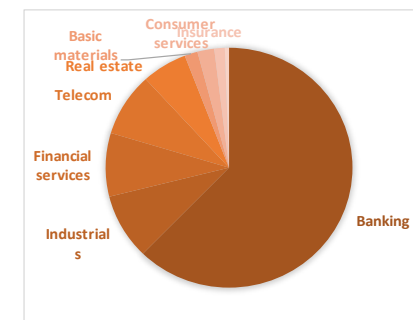
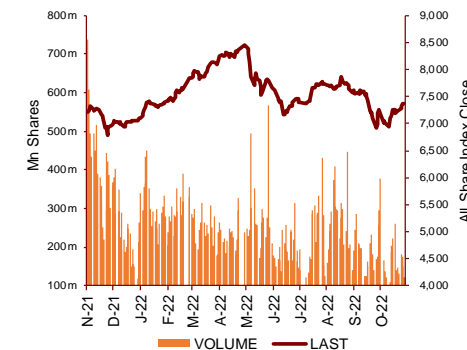
Market Breadth	UP	Down	No Chg
All Share Index	80	37	36
Premier Index	22	2	1
Main Index	58	35	35
NIC 50 Index	44	4	2

Today's Top 5 Gainer %	Close KD	Value KD	DTD (%)
United Projects for Aviation Services	0.233	460	9.91%
Fujairah Cement Industries	0.037	3,228	8.09%
Gulf Franchising Holding	0.088	2,287	7.32%
Advanced Technology	0.499	0	6.17%
Al Massaleh Real Estate	0.038	2	5.63%

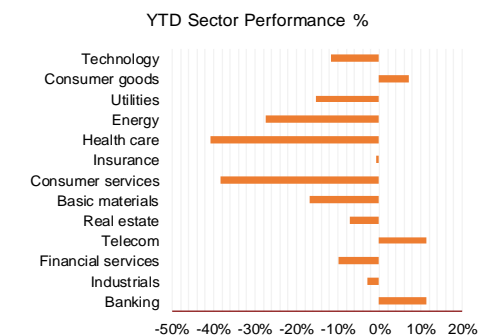
Today's Top 5 Loser %	Close KD	Value KD	DTD (%)
Kuwait and Middle East Fin:	0.106	7,556	-8.62%
Kuwait Remal Real Estate	0.008	7,570	-6.17%
Kuwait Reinsurance	0.272	27	-4.90%
Salbookh Trading	0.017	39	-4.44%
Taameer Real Estate Inves	0.024	6,875	-4.40%

Today's Top 5 by Value	Close KD	Trade Val Mn(KD)	DTD (%)
Kuwait Finance House	0.821	21.87	1.61%
National Industries Group Holding	0.236	5.57	-0.42%
Integrated Holding	0.339	3.15	2.73%
GFH Financial Group	0.079	2.89	3.13%
Agility Public Warehousing	0.792	2.31	1.80%

Top 5 by Volume	Close KD	Trade Vol Mn(Shrs)	DTD (%)
GFH Financial Group	0.079	36.82	3.13%
Kuwait Finance House	0.821	26.79	1.61%
National Industries Group H	0.236	23.54	-0.42%
Aayan Leasing and Investm	0.134	14.72	1.52%
National Consumer Holding	0.114	9.74	2.70%



Sector	Close	DTD Chg Net	DTD (%)	YTD (%)	52W High	52W Low	MKT CAP Bn (KD)	PBV (X)	PE (X)	DY (%)
Banking	1,822.66	16.230	0.90%	11.3%	1,992.2	1,557.8	27.100	1.66	25.06	1.84
Industrials	1,124.28	15.780	1.42%	-2.9%	1,443.6	976.3	3.839	1.01	28.34	3.86
Financial services	1,294.00	10.900	0.85%	-9.9%	1,678.3	1,190.4	3.723	1.02	38.09	2.91
Telecom	1,214.06	1.680	0.14%	11.3%	1,514.7	1,055.9	3.715	1.35	13.48	2.80
Real estate	1,239.79	6.700	0.54%	-7.0%	1,438.0	1,155.8	2.589	0.69	28.28	1.32
Basic materials	853.90	1.760	0.21%	-16.8%	1,233.3	800.8	0.744	1.22	8.97	6.26
Consumer services	455.72	5.510	1.22%	-38.4%	776.8	445.4	0.959	2.14	27.83	2.16
Insurance	1,504.10	-17.580	-1.16%	-0.8%	1,675.7	1,434.5	0.599	0.81	44.12	5.28
Health care	481.52	8.780	1.86%	-40.7%	821.7	420.4	0.239	15.79	13.02	1.06
Energy	1,054.71	17.730	1.71%	-27.4%	1,592.9	975.7	0.214	0.81	20.95	2.34
Utilities	507.89	0.000	0.00%	-15.4%	650.0	494.7	0.212	1.79	15.87	9.33
Consumer goods	1,447.86	16.470	1.15%	7.1%	1,641.0	1,208.7	0.138	0.91	36.89	2.19
Technology	632.92	29.100	4.82%	-11.7%	843.9	539.1	0.009	0.77	NM	-
	7,426.44	61.25	0.83%	5.4%	8,472.2	6,788.8	44.08	1.94	32.10	4.10



DAILY MARKET COVERAGE REPORT

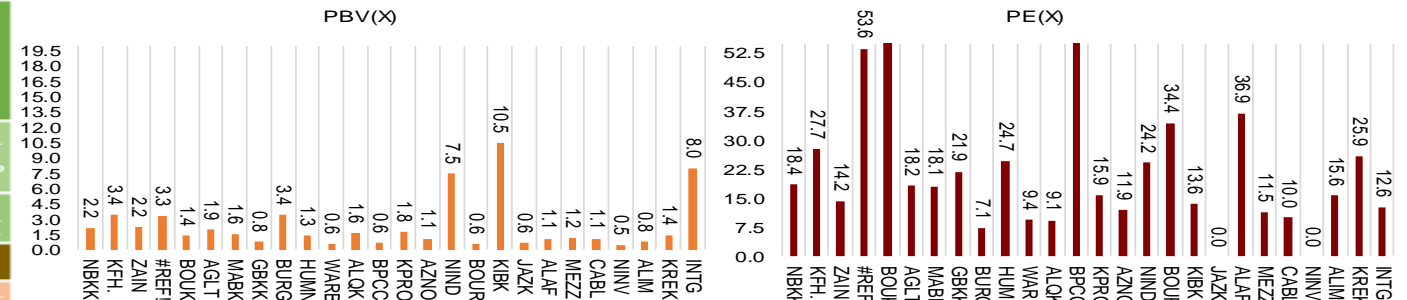
NIC MENA SECURITIES - RESEARCH AND STUDIES DEP



Premier Market

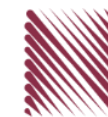
Sunday, November 6, 2022

Premier Market	Price			Valuation Multiples			MKT Cap	Price Performance		Trading Indicators		ROE	ROA	52 Week (KD)		MKT Cap
	Close (KD)	Day Δ	Day % Δ	PBV(X)	PE(X)	DY%	Mn KD	MTD(%)	YTD (%)	Value (Mn KD)	(Mn Shrs)	(%)	(%)	High	Low	%
National Bank of Kuwait	1.119	0.009	0.81%	2.15	18.44	2.19	8,451	4%	18%	1.45	1.30	11.7%	1.5%	1.120	0.903	24.28%
Kuwait Finance House	0.821	0.013	1.61%	3.39	27.70	1.35	10,863	1%	9%	21.87	26.79	12.4%	1.6%	1.039	0.720	31.21%
Mobile Telecommunications	0.601	0.001	0.17%	2.19	14.20	5.50	2,601	0%	1%	1.65	2.74	15.6%	4.3%	0.698	0.564	7.47%
Boubyan Bank	0.824	0.003	0.37%	3.27	53.61	0.55	3,080	0%	16%	0.74	0.90	6.8%	0.8%	0.965	0.681	8.85%
Agility Public Warehousing	0.792	0.014	1.80%	1.35	60.83	2.14	2,000	1%	1%	2.31	2.92	2.7%	2.2%	1.062	0.634	5.75%
Mabane Co.	0.879	0.004	0.46%	1.94	18.19	1.51	1,091	1%	17%	0.14	0.16	11.1%	5.5%	0.910	0.717	3.14%
Gulf Bank	0.345	0.003	0.88%	1.57	18.11	1.95	1,104	1%	30%	0.99	2.87	8.9%	0.9%	0.385	0.230	3.17%
Burgan Bank	0.220	0.001	0.46%	0.80	21.87	2.17	722	1%	-8%	0.50	2.26	3.8%	0.7%	0.307	0.205	2.08%
Human Soft Holding	3.377	0.006	0.18%	3.40	7.12	11.87	411	0%	5%	0.14	0.04	49.6%	34.9%	3.704	3.006	1.18%
Warba Bank	0.245	0.004	1.66%	1.34	24.72	0.00	490	2%	-11%	1.51	6.19	5.8%	0.6%	0.298	0.216	1.41%
Qurain Petrochemical Industries	0.247	-0.001	-0.40%	0.61	9.45	7.26	265	-2%	-29%	0.21	0.82	6.4%	5.2%	0.403	0.210	0.76%
Boubyan Petrochemical	0.803	0.005	0.63%	1.64	9.08	7.52	419	1%	-6%	0.30	0.38	19.1%	10.1%	1.125	0.769	1.20%
Kuwait Projects Company Holding	0.120	0.002	1.69%	0.63	307.69	4.24	293	2%	-15%	0.25	2.10	0.2%	0.1%	0.215	0.112	0.84%
Shamal Az-Zour Al-Oula Power & Water	0.193	0.000	0.00%	1.79	15.87	9.33	212	0%	-15%	0.11	0.58	14.8%	2.7%	0.247	0.188	0.61%
National Industries Group Holding	0.236	-0.001	-0.42%	1.05	11.89	4.69	509	1%	-2%	5.57	23.54	5.3%	2.9%	0.314	0.207	1.46%
Boursa Kuwait Securities Co	2.324	0.019	0.82%	7.45	24.18	2.82	467	2%	15%	0.15	0.07	32.4%	22.9%	2.870	1.800	1.34%
Kuwait International Bank	0.191	0.001	0.53%	0.61	34.41	2.02	203	1%	-9%	0.36	1.88	1.7%	0.3%	0.259	0.186	0.58%
Jazeera Airways	1.776	0.045	2.60%	10.50	13.56	2.66	391	6%	38%	0.49	0.28	92.1%	11.6%	2.099	0.981	1.12%
Alafco Aviation Lease and Finance	0.168	0.002	1.20%	0.62	NM	0.00	160	0%	-23%	0.42	2.47	-15.9%	-3.4%	0.256	0.162	0.46%
Mezzan Holding	0.360	0.002	0.56%	1.05	36.89	4.38	112	-1%	-38%	0.54	1.49	2.8%	1.3%	0.613	0.352	0.32%
Gulf Cable and Electrical Industries	1.240	0.034	2.82%	1.15	11.50	4.98	258	3%	42%	0.21	0.17	11.0%	NM	1.850	0.860	0.74%
National Investments	0.267	0.010	3.89%	1.06	9.98	17.51	213	12%	22%	0.38	1.43	10.9%	8.9%	0.475	0.201	0.61%
Alimtia Investment Group	0.076	0.001	1.34%	0.45	NM	12.08	77	1%	-36%	0.07	0.93	-0.9%	-0.4%	0.138	0.069	0.22%
Kuwait Real Estate	0.107	0.003	2.88%	0.78	15.64	2.80	99	-3%	-38%	0.54	5.08	4.9%	1.9%	0.187	0.097	0.28%
Integrated Holding	0.339	0.009	2.73%	1.40	25.92	3.03	86	4%	-8%	3.15	9.33	5.4%	3.4%	0.478	0.321	0.25%
ALI ALGanim	0.806	0.001	0.12%	8.02	12.64	5.91	224	1%	nm	0.21	0.26	27.8%	10.9%	0.966	0.750	0.64%
Total		78.55	0.95%	2.15	32.86	4.56	34,801	1.6%	8.9%	44.25	96.69					100%



DAILY MARKET COVERAGE REPORT

NIC MENA SECURITIES - RESEARCH AND STUDIES DEP



Premier Market Company	Price			Valuation Multiples			MKT Cap Mn KD	Price Performance		ROE (%)	ROA (%)
	Close (KD)	Day Δ	Day % Δ	PBV(X)	PE (X)	DY%		MTD(%)	YTD (%)		
National Bank of Kuwait	1.119	0.009	0.81%	2.15	18.4	2.19	8,451	3.8%	17.8%	11.7%	1.5%
Kuwait Finance House	0.821	0.013	1.61%	3.39	27.7	1.35	10,863	1.4%	8.5%	12.4%	1.6%
Mobile Telecommunications	0.601	0.001	0.17%	2.19	14.2	5.50	2,601	0.3%	1.0%	15.6%	4.3%
Boubyan Bank	0.824	0.003	0.37%	3.27	53.6	0.55	3,080	0.0%	15.7%	6.8%	0.8%
Agility Public Warehousing	0.792	0.014	1.80%	1.35	60.8	2.14	2,000	1.0%	0.6%	2.7%	2.2%
Mabane Co.	0.879	0.004	0.46%	1.94	18.2	1.51	1,091	0.8%	17.5%	11.1%	5.5%
Gulf Bank	0.345	0.003	0.88%	1.57	18.1	1.95	1,104	0.6%	29.8%	8.9%	0.9%
Burgan Bank	0.220	0.001	0.46%	0.80	21.9	2.17	722	0.9%	-8.0%	3.8%	0.7%
Human Soft Holding	3.377	0.006	0.18%	3.40	7.1	11.87	411	0.4%	4.7%	49.6%	34.9%
Warba Bank	0.245	0.004	1.66%	1.34	24.7	0.00	490	1.7%	-10.6%	5.8%	0.6%
Qurain Petrochemical Industries	0.247	-0.001	-0.40%	0.61	9.4	7.26	265	-2.0%	-28.8%	6.4%	5.2%
Boubyan Petrochemical	0.803	0.005	0.63%	1.64	9.1	7.52	419	0.8%	-5.8%	19.1%	10.1%
Kuwait Projects Company Holding	0.120	0.002	1.69%	0.63	307.7	4.24	293	1.7%	-15.5%	0.2%	0.1%
Shamal Az-Zour Al-Oula Power & Water	0.193	0.000	0.00%	1.79	15.9	9.33	212	0.0%	-15.4%	14.8%	2.7%
National Industries Group Holding	0.236	-0.001	-0.42%	1.05	11.9	4.69	509	0.9%	-2.1%	5.3%	2.9%
Boursa Kuwait Securities Co	2.324	0.019	0.82%	7.45	24.2	2.82	467	2.3%	15.0%	32.4%	22.9%
Kuwait International Bank	0.191	0.001	0.53%	0.61	34.4	2.02	203	1.1%	-8.9%	1.7%	0.3%
Jazeera Airways	1.776	0.045	2.60%	10.50	13.6	2.66	391	6.3%	37.7%	92.1%	11.6%
Alafco Aviation Lease and Finance	0.168	0.002	1.20%	0.62	NM	0.00	160	0.0%	-22.9%	-15.9%	-3.4%
Mezzan Holding	0.360	0.002	0.56%	1.05	36.9	4.38	112	-0.6%	-37.7%	2.8%	1.3%
Gulf Cable and Electrical Industries	1.240	0.034	2.82%	1.15	11.5	4.98	258	2.9%	42.4%	11.0%	9.0%
National Investments	0.267	0.010	3.89%	1.06	10.0	17.51	213	11.7%	21.9%	10.9%	8.9%
Alimtiq Investment Group	0.076	0.001	1.34%	0.45	NM	12.08	77	1.2%	-36.0%	-0.9%	-0.4%
Kuwait Real Estate	0.107	0.003	2.88%	0.78	15.6	2.80	99	-2.7%	-38.4%	4.9%	1.9%
Integrated Holding	0.339	0.009	2.73%	1.40	25.9	3.03	86	4.0%	-8.4%	5.4%	3.4%
ALI ALGanim	0.806	0.001	0.12%	3.72	12.6	5.91	224	1.4%	nm	27.8%	10.9%
Total		78.55	0.95%	2.15	32.86	4.56	34,578	1.6%	8.9%		

Discription	Close (KD)	Day Δ	Day % Δ	50 Day	200 Day	14 Day	Mn KD	MTD(%)	YTD (%)	High	Low
Premier Index	8,320	78.55	0.95%	8,230	8,455	84	34,578	1.6%	9.0%	9,437	7,344

Top 5 Performrs (Today's Price Change)

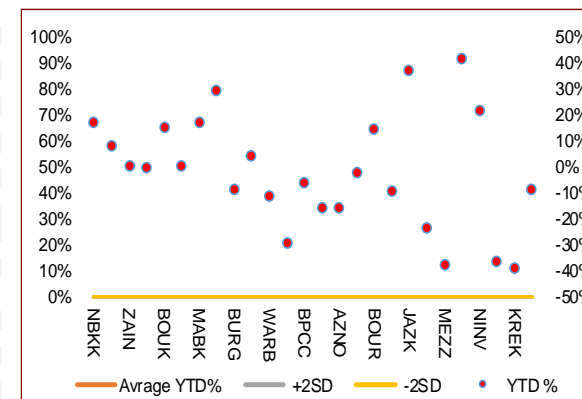
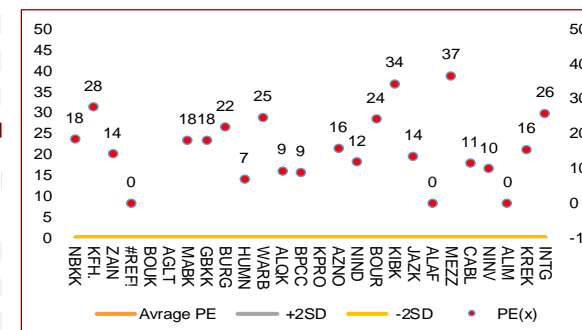
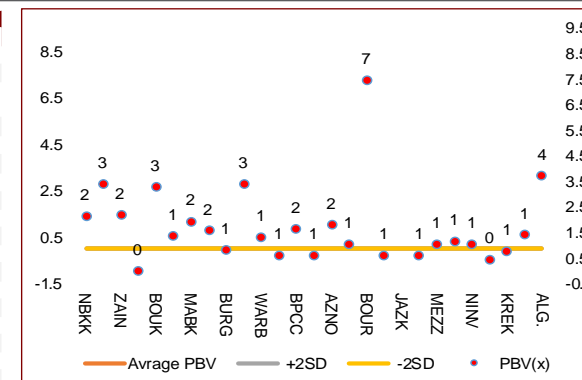
National Investments	0.267	0.010	3.89%	0.256	0.315	88	213	11.7%	21.9%	0.475	0.201
Kuwait Real Estate	0.107	0.003	2.88%	0.112	0.144	59	99	-2.7%	-38.4%	0.187	0.097
Gulf Cable and Electrical Industries	1.240	0.034	2.82%	1.234	1.336	81	258	2.9%	42.4%	1.850	0.860
Integrated Holding	0.339	0.009	2.73%	0.370	0.398	45	86	4.0%	-8.4%	0.478	0.321
Agility Public Warehousing	0.792	0.014	1.80%	0.756	0.855	82	2,000	1.0%	0.6%	1.062	0.634

Middel Performrs (Today's Price Change)

Kuwait Projects Company Holding	0.120	0.002	1.69%	0.135	0.162	67	293	1.7%	-15.5%	0.215	0.112
Warba Bank	0.245	0.004	1.66%	0.238	0.260	85	490	1.7%	-10.6%	0.298	0.216
Kuwait Finance House	0.821	0.013	1.61%	0.845	0.875	75	10,863	1.4%	8.5%	1.039	0.720
Alimtiq Investment Group	0.076	0.001	1.34%	0.082	0.106	67	77	1.2%	-36.0%	0.138	0.069
Alafco Aviation Lease and Finance	0.168	0.002	1.20%	0.180	0.202	47	160	0.0%	-22.9%	0.256	0.162
Gulf Bank	0.345	0.003	0.88%	0.332	0.322	82	1,104	0.6%	29.8%	0.385	0.230
Boursa Kuwait Securities Co	2.324	0.019	0.82%	2.242	2.376	72	467	2.3%	15.0%	2.870	1.800
National Bank of Kuwait	1.119	0.009	0.81%	1.037	1.039	92	8,451	3.8%	17.8%	1.120	0.903
Boubyan Petrochemical	0.803	0.005	0.63%	0.847	0.936	59	419	0.8%	-5.8%	1.125	0.769
Mezzan Holding	0.360	0.002	0.56%	0.100	0.100	48	112	-0.6%	-37.7%	1.210	0.996
Kuwait International Bank	0.191	0.001	0.53%	0.202	0.218	59	203	1.1%	-8.9%	0.259	0.186
Burgan Bank	0.220	0.001	0.46%	0.228	0.253	79	722	0.9%	-8.0%	0.307	0.205
Boubyan Bank	0.824	0.003	0.37%	0.811	0.809	75	3,080	0.0%	15.7%	0.965	0.681
Human Soft Holding	3.377	0.006	0.18%	3.339	3.320	70	411	0.4%	4.7%	3.704	3.006

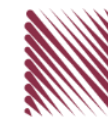
Bottom 5 Performrs (Today's Price Change)

Mobile Telecommunications	0.601	0.001	0.17%	0.592	0.611	73	2,601	0.3%	1.0%	0.698	0.564
Ahli United Bank BSC	#N/A	#N/A	#N/A	0.305	0.288	50	#N/A	#N/A	#N/A	0.336	0.240
Shamal Az-Zour Al-Oula Power & Water	0.193	0.000	0.00%	0.196	0.211	62	212	0.0%	-15.4%	0.247	0.188
Qurain Petrochemical Industries	0.247	-0.001	-0.40%	0.279	0.340	78	265	-2.0%	-28.8%	0.403	0.210
National Industries Group Holding	0.236	-0.001	-0.42%	0.245	0.259	77	509	0.9%	-2.1%	0.314	0.207



DAILY MARKET COVERAGE REPORT

NIC MENA SECURITIES - RESEARCH AND STUDIES DEP



Banking Sector		Price			Valuation Multiples			MKT Cap	Price Performance		Trading Indicators		ROE	ROA	52 Week (KD)		MKT Cap
Company	Close (KD)	Day Δ	Day % Δ	PBV(X)	PE(X)	DY%	Mn KD	MTD(%)	YTD (%)	Value (Mn KD)	(Mn Shrs)	(%)	(%)	High	Low	%	
National Bank of Kuwait	1.119	0.009	0.81%	2.15	18.44	2.19	8,451	3.8%	17.8%	1.45	1.30	11.7%	1.5%	1.120	0.903	19.17%	
Kuwait Finance House	0.821	0.013	1.61%	3.39	27.70	1.35	10,863	1.4%	8.5%	21.87	26.79	12.4%	1.6%	1.039	0.720	24.64%	
Boubyan Bank	0.824	0.003	0.37%	3.27	53.61	0.55	3,080	0.0%	15.7%	0.74	0.90	6.8%	0.8%	0.965	0.681	6.99%	
Commercial Bank of Kuwait	0.486	0.000	0.00%	1.15	12.11	4.12	963	0.0%	-3.0%	0.00	0.00	9.9%	1.9%	0.549	0.456	2.18%	
Gulf Bank	0.345	0.003	0.88%	1.57	18.11	1.95	1,104	0.6%	29.8%	0.99	2.87	8.9%	0.9%	0.385	0.230	2.50%	
Burgan Bank	0.220	0.001	0.46%	0.80	21.87	2.17	722	0.9%	-8.0%	0.50	2.26	3.8%	0.7%	0.307	0.205	1.64%	
Ahli United Bank	0.284	-0.003	-1.05%	0.96	25.04	1.66	640	6.4%	-3.5%	0.22	0.77	3.8%	0.8%	0.324	0.250	1.45%	
Warba Bank	0.245	0.004	1.66%	1.34	24.72	0.00	490	1.7%	-10.6%	1.51	6.19	5.8%	0.6%	0.298	0.216	1.11%	
Al Ahli Bank of Kuwait	0.330	0.003	0.92%	0.98	21.68	1.46	584	-0.3%	36.4%	0.78	2.38	4.5%	0.6%	0.355	0.216	1.33%	
Kuwait International Bank	0.191	0.001	0.53%	0.61	34.41	2.02	203	1.1%	-8.9%	0.36	1.88	1.7%	0.3%	0.259	0.186	0.46%	
Total Banking Sector - 10 Companies							27,100			28.42	45.33					61.48%	

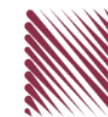
Basic Materials		Price			Valuation Multiples			MKT Cap	Price Performance		Trading Indicators		ROE	ROA	52 Week (KD)		MKT Cap
Company	Close (KD)	Day Δ	Day % Δ	PBV(X)	PE(X)	DY%	Mn KD	MTD(%)	YTD (%)	Value (Mn KD)	(Mn Shrs)	(%)	(%)	High	Low	%	
Qurain Petrochemical Industries	0.247	-0.001	-0.40%	0.61	9.45	7.26	265	-1.98%	-28.82%	0.21	0.82	6.4%	5.2%	0.403	0.210	0.60%	
Boubyan Petrochemical	0.803	0.005	0.63%	1.64	9.08	7.52	419	0.75%	-5.75%	0.30	0.38	19.1%	10.1%	1.125	0.769	0.95%	
Al Kout Industrial Projects	0.390	0.000	0.00%	1.40	4.93	10.26	39	0.00%	-21.37%	0.00	0.00	30.5%	20.1%	0.545	0.390	0.09%	
Kuwait Foundry	0.291	0.000	0.00%	1.21	12.40	0.00	21	0.34%	-21.14%	0.00	0.00	10.7%	10.3%	0.424	0.260	0.05%	
Total Basic Materials - 4 Companies							744			0.51	1.20					1.69%	

Consumer Goods		Price			Valuation Multiples			MKT Cap	Price Performance		Trading Indicators		ROE	ROA	52 Week (KD)		MKT Cap
Company	Close (KD)	Day Δ	Day % Δ	PBV(X)	PE(X)	DY%	Mn KD	MTD(%)	YTD (%)	Value (Mn KD)	(Mn Shrs)	(%)	(%)	High	Low	%	
Mezzan Holding	0.360	0.002	0.56%	1.05	36.89	4.38	112	-0.6%	-37.7%	0.54	1.49	2.8%	1.3%	0.613	0.352	0.25%	
Livestock Transport and Trading	0.124	0.005	4.20%	0.77	NM	0.00	26	3.3%	-31.9%	0.00	0.03	-14.5%	-8.2%	0.196	0.112	0.06%	
Total Consumer Goods - 2 Companies							138			0.54	1.52					0.31%	

Consumer Services		Price			Valuation Multiples			MKT Cap	Price Performance		Trading Indicators		ROE	ROA	52 Week (KD)		MKT Cap
Company	Close (KD)	Day Δ	Day % Δ	PBV(X)	PE(X)	DY%	Mn KD	MTD(%)	YTD (%)	Value (Mn KD)	(Mn Shrs)	(%)	(%)	High	Low	%	
Jazeera Airways	1.776	0.045	2.60%	10.50	13.56	2.66	391	6.3%	37.7%	0.49	0.28	92.1%	11.6%	2.099	0.981	0.89%	
Kuwait National Cinema	0.950	0.000	0.00%	1.16	9.25	3.16	88	4.6%	7.7%	0.00	0.00	13.3%	6.1%	0.999	0.850	0.20%	
Oula Fuel Marketing	0.147	-0.003	-2.00%	0.91	15.86	3.33	59	1.4%	-5.8%	0.00	0.02	5.6%	2.9%	0.178	0.140	0.13%	
Al Soor Fuel Marketing	0.152	0.001	0.66%	0.89	19.39	3.31	61	2.0%	-1.9%	0.00	0.02	4.8%	3.6%	0.175	0.142	0.14%	
Sultan Center Food Products	0.112	0.002	1.82%	0.65	0.90	0.00	31	0.9%	-46.7%	0.02	0.21	74.2%	12.2%	0.269	0.103	0.07%	
Jiyad Holding	0.022	0.000	0.93%	0.25	NM	0.00	4	-0.9%	-73.1%	0.11	4.94	-16.2%	-10.9%	0.099	0.015	0.01%	
IFA Hotels and Resorts	0.027	0.000	-1.48%	3.51	177.33	0.00	17	-1.5%	-50.3%	0.02	0.56	2.0%	0.4%	0.073	0.025	0.04%	
Kuwait Resorts	0.079	0.004	4.81%	0.51	11.06	3.93	15	2.6%	-18.6%	0.10	1.28	4.8%	4.2%	0.110	0.067	0.03%	
Future Kid Entertainment and Real Estate	0.117	0.004	3.54%	1.01	10.24	0.00	13	0.9%	48.7%	0.00	0.01	10.4%	4.7%	0.130	0.074	0.03%	
Al Eid Food	0.244	0.000	0.00%	1.92	14.83	2.80	41	2.1%	5.7%	0.30	1.23	13.5%	10.1%	0.304	0.207	0.09%	
Kuwait Hotels	0.170	0.000	0.00%	2.04	21.12	2.94	10	4.3%	142.9%	0.00	0.00	9.9%	6.4%	0.201	0.070	0.02%	
Palms Agro Production	0.078	0.000	0.00%	0.79	NM	0.00	4	0.0%	14.4%	0.00	0.00	-13.8%	-10.9%	0.083	0.043	0.01%	
ALI ALGanim	0.806	0.001	0.12%	3.72	12.64	5.91	224	1.4%	nm	0.21	0.26	27.8%	10.9%	0.966	0.750	0.51%	
Total Consumer Services - 13 Companies							959			1.25	8.81					2.17%	

DAILY MARKET COVERAGE REPORT

NIC MENA SECURITIES - RESEARCH AND STUDIES DEP



Financial Services	Price			Valuation Multiples			MKT Cap	Price Performance		Trading Indicators		ROE	ROA	52 Week (KD)		MKT Cap
	Company	Close (KD)	Day Δ	Day % Δ	PBV(X)	PE(X)	DY%	Mn KD	MTD(%)	YTD (%)	Value (Mn KD)	(Mn Shrs)	(%)	(%)	High	Low
Egypt Kuwait Holding	0.374	0.004	1.08%	2.12	5.75	5.77	421	-2.3%	-11.8%	0.14	0.38	37.1%	17.5%	0.465	0.353	0.96%
Kuwait Projects Company Holding	0.120	0.002	1.69%	0.63	307.69	4.24	293	1.7%	-15.5%	0.25	2.10	0.2%	0.1%	0.215	0.112	0.67%
National Industries Group Holding	0.236	-0.001	-0.42%	1.05	11.89	4.69	509	0.9%	-2.1%	5.57	23.54	5.3%	2.9%	0.314	0.207	1.15%
Boursa Kuwait Securities Co	2.324	0.019	0.82%	7.45	24.18	2.82	467	2.3%	15.0%	0.15	0.07	32.4%	22.9%	2.870	1.800	1.06%
GFH Financial Group	0.079	0.002	3.13%	0.85	9.16	4.74	275	1.4%	-19.7%	2.89	36.82	9.3%	1.2%	0.109	0.073	0.62%
National Investments	0.267	0.010	3.89%	1.06	9.98	17.51	213	11.7%	21.9%	0.38	1.43	10.9%	8.9%	0.475	0.201	0.48%
Tamdeen Investment	0.625	0.000	0.00%	0.72	16.16	1.60	213	13.6%	64.9%	0.00	0.00	4.9%	3.8%	0.625	0.309	0.48%
Alimtiqaz Investment Group	0.076	0.001	1.34%	0.45	NM	12.08	77	1.2%	-36.0%	0.07	0.93	-0.9%	-0.4%	0.138	0.069	0.18%
Commercial Facilities	0.174	0.000	0.00%	0.56	8.60	8.62	88	-1.1%	-15.5%	0.05	0.28	6.5%	3.6%	0.228	0.165	0.20%
Aayan Leasing and Investment	0.134	0.002	1.52%	0.99	12.69	0.00	89	4.7%	-19.0%	1.98	14.72	8.2%	6.0%	0.204	0.104	0.20%
Kuwait Investment	0.132	0.002	1.54%	0.63	7.65	19.23	72	0.0%	-53.0%	0.29	2.15	8.1%	4.6%	0.308	0.113	0.16%
Noor Financial Investment	0.183	0.000	0.00%	1.15	5.17	2.62	93	1.7%	-28.1%	0.03	0.14	22.0%	16.2%	0.308	0.163	0.21%
Arzan Financial Group for Financing and Investmei	0.127	0.000	0.00%	0.88	9.35	1.90	102	-3.8%	-18.4%	0.22	1.74	9.4%	7.0%	0.180	0.109	0.23%
Kuwait Financial Centre	0.109	0.003	2.83%	0.53	8.25	8.98	55	1.9%	-36.8%	0.04	0.41	6.9%	4.0%	0.197	0.101	0.12%
Gulf Investment House	0.385	-0.005	-1.28%	3.67	NM	0.00	157	-3.5%	28.3%	0.00	0.00	-3.0%	-2.0%	0.422	0.217	0.36%
Arabi Group Holdings	0.289	-0.007	-2.36%	1.73	NM	0.00	48	0.7%	-0.7%	0.08	0.27	-29.0%	-4.0%	0.499	0.169	0.11%
Kuwait and Middle East Financial Investment	0.106	-0.010	-8.62%	0.92	12.34	6.03	23	-20.3%	-29.3%	0.01	0.07	7.5%	5.2%	0.175	0.094	0.05%
Privatization Holding	0.035	0.001	3.22%	0.29	NM	0.00	22	-4.3%	-35.6%	0.01	0.37	-7.1%	-5.5%	0.070	0.032	0.05%
Asiya Capital Investments	0.044	0.001	1.60%	0.41	2.82	0.00	34	-0.2%	-14.6%	0.09	1.93	15.5%	15.2%	0.071	0.037	0.08%
Umm Al Qaiwain General Investment Co	0.094	0.000	0.00%	0.57	4.97	5.32	34	0.0%	7.8%	0.00	0.00	12.0%	10.0%	0.108	0.086	0.08%
Securities House	0.059	0.002	2.77%	0.60	10.14	0.00	25	0.3%	-39.9%	0.05	0.79	5.8%	5.0%	0.114	0.052	0.06%
Kamco Investment	0.099	0.001	1.44%	0.55	3.91	10.26	34	-0.1%	-23.3%	0.07	0.66	14.5%	6.9%	0.167	0.089	0.08%
First Investment	0.077	0.003	3.77%	0.67	110.00	0.00	34	2.9%	-8.6%	0.14	1.83	0.6%	0.7%	0.104	0.068	0.08%
Inovest BSC Public	0.078	0.001	1.69%	0.00	NM	0.00	23	0.9%	-33.9%	0.26	3.33	2.7%	1.7%	0.189	0.070	0.05%
Coast Investment and Development	0.075	0.000	0.00%	0.77	23.51	6.67	35	-2.6%	-28.6%	0.01	0.13	3.2%	3.1%	0.126	0.066	0.08%
Al Madar Investment	0.097	0.000	0.00%	0.92	56.73	0.00	20	-1.0%	-18.5%	0.00	0.00	1.6%	1.7%	0.124	0.083	0.05%
Bayan Investment	0.041	0.000	0.00%	0.31	NM	0.00	13	0.1%	-28.7%	0.00	0.00	-2.4%	-1.5%	0.071	0.036	0.03%
Al Manar Financing and Leasing	0.059	0.000	0.00%	0.58	19.22	0.00	16	-2.5%	-5.3%	0.00	0.06	2.9%	2.3%	0.079	0.049	0.04%
Manazel Holding	0.028	0.000	-0.36%	0.60	9.45	0.00	12	1.1%	-46.1%	0.01	0.27	6.2%	2.0%	0.060	0.025	0.03%
Kuwait Finance and Investment	0.066	0.000	0.00%	0.49	28.70	0.00	20	4.8%	-24.0%	0.00	0.00	1.7%	1.6%	0.102	0.055	0.05%
National International Holding	0.102	-0.002	-1.92%	0.62	14.01	4.67	22	-7.3%	-30.9%	0.00	0.00	4.1%	2.8%	0.167	0.091	0.05%
Osoul Investment	0.091	0.001	1.00%	0.83	NM	11.76	12	2.1%	11.2%	0.02	0.25	-4.4%	-4.0%	0.118	0.062	0.03%
UniCap Investment and Finance	0.055	0.000	-0.72%	0.61	64.71	0.00	12	-0.9%	-19.7%	0.04	0.71	1.9%	0.2%	0.086	0.050	0.03%
Amar Finance and Leasing	0.063	0.000	0.00%	0.58	3.42	0.00	12	0.0%	-3.8%	0.00	0.00	18.6%	17.3%	0.082	0.058	0.03%
Gulf North Africa Holding	0.152	0.001	0.66%	1.72	59.40	0.00	20	2.7%	76.5%	0.22	1.43	3.0%	2.4%	0.141	0.057	0.05%
International Financial Advisors	0.090	0.000	-0.44%	0.58	35.98	0.00	22	3.0%	-20.7%	0.01	0.15	1.9%	0.7%	0.127	0.082	0.05%
Credit Rating and Collection	0.015	-0.001	-4.40%	0.52	NM	0.00	3	-5.0%	-62.2%	0.00	0.01	-0.4%	-0.3%	0.069	0.014	0.01%
Ekttitab Holding	0.011	0.000	0.92%	0.36	NM	0.00	4	2.8%	-48.4%	0.01	1.24	-16.8%	-12.9%	0.024	0.009	0.01%
Kuwait Syrian Holding Co	0.034	0.000	0.00%	0.33	5.48	0.00	6	0.0%	-20.6%	0.00	0.00	8.7%	6.2%	0.059	0.026	0.01%
Warba Capital Holding	0.084	0.000	0.00%	0.93	NM	0.00	8	-1.5%	-2.3%	0.00	0.01	-0.8%	-0.7%	0.119	0.070	0.02%
National Consumer Holding	0.114	0.003	2.70%	5.16	NM	0.00	34	2.7%	-4.9%	1.11	9.74	-8.0%	-7.5%	0.162	0.097	0.08%
Al Deera Holding	0.170	-0.005	-2.86%	1.14	8.56	0.00	16	1.8%	-15.0%	0.00	0.00	12.5%	6.5%	0.200	0.145	0.04%
AL Safat Investment	0.098	0.000	-0.10%	1.24	NM	0.00	28	-0.9%	-20.0%	0.13	1.36	-1.8%	-1.6%	0.270	0.091	0.06%
Gulf Franchising Holding	0.088	0.006	7.32%	1.73	NM	0.00	4	7.3%	-8.2%	0.00	0.03	-5.7%	-1.6%	0.148	0.063	0.01%
Total Financial Services - 44 Companies							3,720			14.32	109.32					8.44%

DAILY MARKET COVERAGE REPORT

NIC MENA SECURITIES - RESEARCH AND STUDIES DEP

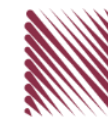


Health Care	Price			Valuation Multiples			MKT Cap	Price Performance		Trading Indicators		ROE	ROA	52 Week (KD)		MKT Cap
	Company	Close (KD)	Day Δ	Day % Δ	PBV(X)	PE(X)		DY%	Mn KD	MTD(%)	YTD (%)			Value (Mn KD)	(Mn Shrs)	
Al-Maidan Clinic for Oral Health Services	0.694	0.000	0.00%	2.75	15.27	0.00	156	-0.1%	-49.6%	0.00	0.00	19.4%	12.5%	1.400	0.556	0.35%
Advanced Technology	0.499	0.029	6.17%	1.11	10.78	3.19	75	0.0%	-3.7%	0.00	0.00	10.7%	2.1%	0.595	0.450	0.17%
Yiaco Medical	0.450	0.000	0.00%	43.51	NM	0.00	8	0.0%	2.7%	0.00	0.00	-161.7%	-4.7%	0.480	0.399	0.02%
Total Health Care - 3 Companies							239			0.00	0.00					0.54%

Industrials	Price			Valuation Multiples			MKT Cap	Price Performance		Trading Indicators		ROE	ROA	52 Week (KD)		MKT Cap
	Company	Close (KD)	Day Δ	Day % Δ	PBV(X)	PE(X)		DY%	Mn KD	MTD(%)	YTD (%)			Value (Mn KD)	(Mn Shrs)	
Agility Public Warehousing	0.792	0.014	1.80%	1.35	60.83	2.14	2,000	1.0%	0.6%	2.31	2.92	2.7%	2.2%	1.062	0.634	4.54%
Human Soft Holding	3.377	0.006	0.18%	3.40	7.12	11.87	411	0.4%	4.7%	0.14	0.04	49.6%	34.9%	3.704	3.006	0.93%
Alafco Aviation Lease and Finance	0.168	0.002	1.20%	0.62	NM	0.00	160	0.0%	-22.9%	0.42	2.47	-15.9%	-3.4%	0.256	0.162	0.36%
Kuwait Cement	0.223	-0.007	-3.04%	0.82	158.16	2.17	159	5.7%	-3.5%	0.01	0.03	0.5%	0.3%	0.295	0.194	0.36%
Gulf Cable and Electrical Industries	1.240	0.034	2.82%	1.15	11.50	4.98	258	2.9%	42.4%	0.21	0.17	11.0%	9.0%	1.850	0.860	0.59%
Integrated Holding	0.339	0.009	2.73%	1.40	25.92	3.03	86	4.0%	-8.4%	3.15	9.33	5.4%	3.4%	0.478	0.321	0.19%
Kuwait Portland Cement	0.838	-0.027	-3.12%	1.18	17.53	8.09	84	0.4%	-14.5%	0.03	0.03	6.8%	5.3%	1.240	0.751	0.19%
Educational Holding Group	2.430	-0.060	-2.41%	4.13	9.23	21.40	51	-0.8%	-39.3%	0.00	0.00	30.0%	17.2%	4.431	2.330	0.12%
United Projects for Aviation Services	0.233	0.021	9.91%	0.85	83.21	0.00	88	14.2%	-6.0%	0.00	0.00	1.0%	0.6%	0.318	0.182	0.20%
Heavy Engineering Industries and Shipbuilding	0.649	0.015	2.37%	1.74	21.44	3.15	117	3.8%	27.5%	0.38	0.59	8.2%	3.2%	0.960	0.442	0.27%
National Industries	0.198	-0.002	-1.00%	0.81	12.48	5.00	69	3.7%	2.6%	0.00	0.01	6.5%	4.7%	0.260	0.181	0.16%
ACICO Industries	0.092	0.000	0.22%	0.42	NM	0.00	30	1.7%	-33.7%	0.03	0.32	-1.9%	-0.5%	0.208	0.076	0.07%
Kuwait Company for Process Plant Construction a	0.306	-0.005	-1.61%	1.23	19.83	7.96	36	-0.3%	-35.5%	0.00	0.00	6.1%	3.5%	0.522	0.286	0.08%
Ras Al Khaimah for White Cement and Constructi	0.141	0.001	0.71%	1.19	26.53	5.92	71	0.7%	11.9%	0.02	0.14	4.6%	3.7%	0.175	0.113	0.16%
Combined Group Contracting	0.423	0.016	3.93%	1.57	6.48	6.14	72	3.2%	19.5%	0.03	0.07	26.3%	5.8%	0.500	0.308	0.16%
Kuwait and Gulf Link Transport	0.058	-0.001	-0.85%	0.34	3.13	0.00	16	0.9%	-15.0%	0.00	0.04	11.6%	2.6%	0.106	0.054	0.04%
Shuaiba Industrial	0.155	0.006	4.03%	0.85	12.90	8.05	15	4.0%	-31.1%	0.02	0.12	6.6%	5.4%	0.310	0.137	0.03%
National Cleaning	0.037	0.001	3.66%	0.29	NM	0.00	9	-1.9%	-35.3%	0.00	0.06	-13.9%	-4.1%	0.079	0.031	0.02%
Fujairah Cement Industries	0.037	0.003	8.09%	0.21	NM	0.00	13	-2.6%	-30.7%	0.00	0.09	-12.7%	-6.3%	0.069	0.028	0.03%
Mubarrad Holding	0.082	0.003	3.14%	0.63	8.66	6.29	13	2.5%	-25.5%	0.01	0.16	7.3%	6.5%	0.127	0.071	0.03%
Specialities Group Holding	0.099	0.004	3.87%	0.53	10.79	7.11	16	8.1%	-20.1%	0.02	0.25	5.0%	3.6%	0.152	0.076	0.04%
Salbookh Trading	0.017	-0.001	-4.44%	0.52	NM	0.00	2	-7.0%	-60.4%	0.00	0.00	-51.7%	-28.6%	0.061	0.016	0.00%
Metal and Recycling	0.097	-0.001	-0.92%	1.25	NM	0.00	9	7.4%	2.0%	0.00	0.00	-12.0%	-2.0%	0.129	0.060	0.02%
Equipment Holding	0.038	0.001	1.60%	0.61	NM	0.00	3	18.8%	-30.3%	0.00	0.03	-11.1%	-3.2%	0.079	0.030	0.01%
Jassim Transport & Stevedoring	0.331	0.001	0.30%	1.12	14.44	4.85	50	0.6%	-18.7%	0.01	0.12	8.0%	6.3%	0.410	0.300	0.11%
Total Industrials - 24 Companies							3,839			6.80	17.02					8.71%

DAILY MARKET COVERAGE REPORT

NIC MENA SECURITIES - RESEARCH AND STUDIES DEP



Insurance	Price			Valuation Multiples			MKT Cap	Price Performance		Trading Indicators		ROE	ROA	52 Week (KD)		MKT Cap
	Company	Close (KD)	Day Δ	Day % Δ	PBV(X)	PE(X)		DY%	Mn KD	MTD(%)	YTD (%)			Value (Mn KD)	(Mn Shrs)	
Gulf Insurance Group	0.970	-0.015	-1.52%	1.13	4.16	10.76	275	-1.5%	-9.3%	0.00	0.00	28.6%	5.5%	1.200	0.941	0.62%
Al Ahleia Insurance	0.491	0.000	0.00%	0.82	6.77	7.13	106	-3.5%	-2.8%	0.06	0.12	12.5%	4.4%	0.612	0.453	0.24%
Kuwait Insurance	0.510	0.005	0.99%	0.77	7.91	6.53	94	3.2%	31.8%	0.14	0.27	10.4%	6.1%	0.533	0.379	0.21%
Kuwait Reinsurance	0.272	-0.014	-4.90%	0.98	9.61	1.60	65	-4.9%	7.8%	0.00	0.00	10.8%	3.4%	0.373	0.217	0.15%
Bahrain Kuwait Insurance	0.191	0.000	0.00%	1.33	11.98	8.44	29	0.0%	0.0%	0.00	0.00	11.0%	2.1%	0.191	0.191	0.06%
Warba Insurance and Reinsurance	0.126	-0.002	-1.56%	0.54	8.76	7.81	21	0.0%	-20.8%	0.00	0.03	6.2%	2.1%	0.165	0.119	0.05%
First Takaful Insurance	0.046	0.000	0.00%	0.60	284.38	0.00	5	0.0%	-9.0%	0.00	0.00	0.2%	0.1%	0.079	0.034	0.01%
Wethaq Takaful Insurance	0.037	0.000	0.00%	0.33	19.37	0.00	4	0.0%	-27.3%	0.00	0.00	1.7%	1.7%	0.079	0.024	0.01%
Total Insurance - 8 Companies							599			0.21	0.42					1.36%

Energy	Price			Valuation Multipels			MKT Cap	Price Performance		Trading Indicators		ROE	ROA	52 Week (KD)		MKT Cap
	Company	Close (KD)	Day Δ	Day % Δ	PBV(X)	PE(X)		DY%	Mn KD	MTD(%)	YTD (%)			Value (Mn KD)	(Mn Shrs)	
National Petroleum Services	0.724	0.000	0.00%	1.83	12.98	4.83	70	3.9%	-11.7%	0.00	0.00	14.5%	11.6%	0.880	0.625	0.16%
Independent Petroleum Group	0.450	0.015	3.45%	0.82	15.07	6.90	81	4.7%	-23.5%	0.00	0.00	5.5%	1.0%	0.612	0.368	0.18%
Burgan for Well Drilling Trading and Maintenance	0.118	0.001	0.85%	0.43	9.90	2.33	31	2.6%	-11.7%	0.08	0.64	4.4%	1.4%	0.161	0.094	0.07%
Energy House Holding	0.022	0.000	0.46%	0.79	NM	0.00	16	0.5%	-65.5%	0.00	0.00	-1.4%	-2.5%	0.086	0.019	0.04%
Gulf Petroleum Investment	0.016	0.000	1.95%	0.22	NM	0.00	7	-1.9%	-35.9%	0.01	0.37	-4.0%	-2.6%	0.031	0.013	0.02%
Senergy Holding	0.039	0.002	5.48%	0.77	45.83	0.00	8	-1.0%	-21.4%	0.00	0.01	1.7%	1.4%	0.063	0.036	0.02%
Total Energy - 6 Companies							214			0.08	1.03					0.48%

DAILY MARKET COVERAGE REPORT

NIC MENA SECURITIES - RESEARCH AND STUDIES DEP



Real Estate	Price		Valuation Multiples				MKT Cap	Performance		Trading Indicators		ROE	ROA	2 Week (KD)		MKT Cap
Company	Close (KD)	Day Δ	Day % Δ	PBV(X)	PE(X)	DY%	Mn KD	MTD(%)	YTD (%)	Value (Mn KD)	(Mn Shrs)	(%)	(%)	High	Low	%
Mabane Co.	0.879	0.004	0.46%	1.94	18.19	1.51	1,091	0.8%	17.5%	0.14	0.16	11.1%	5.5%	0.910	0.717	2.48%
Salhia Real Estate	0.473	-0.002	-0.42%	1.57	19.98	3.01	243	1.5%	-6.1%	0.45	0.93	7.9%	3.2%	0.578	0.428	0.55%
Commercial Real Estate	0.099	0.001	0.51%	0.60	10.16	5.08	174	-0.6%	-20.9%	0.65	6.58	6.2%	3.3%	0.140	0.094	0.39%
National Real Estate	0.140	0.001	0.72%	0.78	1.27	0.00	260	0.0%	-24.0%	0.29	2.04	64.5%	38.6%	0.212	0.125	0.59%
Tamdeen Real Estate	0.380	0.000	0.00%	0.74	8.75	2.63	153	2.7%	12.1%	0.00	0.00	9.2%	3.9%	0.380	0.296	0.35%
Kuwait Real Estate	0.107	0.003	2.88%	0.78	15.64	2.80	99	-2.7%	-38.4%	0.54	5.08	4.9%	1.9%	0.187	0.097	0.22%
United Real Estate	0.077	0.001	1.32%	0.47	110.87	0.00	82	7.0%	1.5%	0.02	0.25	0.4%	-0.1%	0.121	0.064	0.19%
First Dubai for Real Estate Development	0.051	0.000	-0.20%	0.48	23.61	0.00	38	2.2%	-51.5%	0.02	0.43	2.1%	1.7%	0.120	0.044	0.09%
Al Mazaya Holding	0.049	0.000	0.82%	0.50	37.14	0.00	31	-0.2%	-35.4%	0.03	0.61	1.3%	0.7%	0.089	0.043	0.07%
Ajial Real Estate Entertainment	0.283	0.009	3.28%	0.42	18.63	1.82	55	3.7%	-6.9%	0.01	0.05	2.2%	1.8%	0.344	0.268	0.12%
Injazzat Real Estate Development	0.080	0.001	0.89%	0.47	6.35	6.35	27	2.8%	-20.5%	0.00	0.04	7.5%	3.9%	0.114	0.070	0.06%
Munshaat Real Estate Projects	0.063	0.000	-0.32%	1.88	5.18	0.00	20	4.2%	-12.6%	0.00	0.00	42.9%	4.5%	0.076	0.052	0.05%
Aayan Real Estate	0.069	0.001	0.74%	0.48	22.31	0.00	28	2.2%	-22.6%	0.04	0.66	2.2%	2.3%	0.105	0.056	0.06%
Al Argan International Real Estate	0.095	0.000	-0.11%	0.32	34.76	0.00	24	8.5%	-18.9%	0.00	0.03	0.9%	0.3%	0.144	0.073	0.05%
Al-Enmaa Real Estate	0.057	0.001	1.80%	0.62	NM	0.00	25	-4.6%	-24.2%	0.02	0.41	-5.9%	NM	0.091	0.050	0.06%
Arkan Al Kuwait Real Estate	0.119	-0.001	-0.83%	0.84	11.60	5.00	30	-4.0%	-4.0%	0.00	0.02	7.4%	2.3%	0.151	0.113	0.07%
Kuwait Business Town Real Estate	0.058	0.001	2.47%	0.72	16.16	0.00	33	-1.0%	-28.7%	0.14	2.42	3.8%	2.8%	0.097	0.046	0.08%
Dalqan Real Estate	0.210	0.002	0.96%	1.88	194.44	0.00	13	1.4%	-3.2%	0.01	0.05	1.0%	1.0%	0.264	0.195	0.03%
Sokouk Holding	0.023	-0.001	-2.50%	0.55	NM	0.00	13	-5.3%	-28.2%	0.02	0.64	-2.9%	-1.7%	0.037	0.020	0.03%
Tijara and Realestate Investment	0.055	0.001	2.44%	0.49	8.30	5.63	20	1.1%	-10.6%	0.04	0.71	6.0%	3.3%	0.089	0.044	0.05%
Al-Arabiya Real Estate	0.029	0.000	0.00%	0.35	NM	0.00	15	-1.0%	-31.0%	0.02	0.80	-23.1%	-7.3%	0.052	0.026	0.03%
Aqar Real Estate Investments	0.059	0.000	0.17%	0.49	18.98	5.62	14	6.3%	-24.6%	0.00	0.09	2.6%	2.1%	0.097	0.052	0.03%
Mashaer Holding	0.054	-0.002	-2.73%	0.63	NM	0.00	9	-2.4%	-23.5%	0.00	0.03	-6.5%	-3.2%	0.085	0.049	0.02%
Dar Al Thuraya Real Estate	0.170	0.000	0.00%	1.47	25.07	0.00	25	0.0%	61.9%	0.00	0.00	6.0%	5.3%	0.172	0.092	0.06%
Osos Holding Group	0.105	0.000	0.00%	0.92	8.36	9.52	11	-4.5%	0.0%	0.00	0.02	11.2%	7.1%	0.147	0.094	0.03%
Al Massaleh Real Estate	0.038	0.002	5.63%	0.62	NM	0.00	9	7.1%	-28.0%	0.00	0.00	-15.4%	-3.2%	0.059	0.030	0.02%
Kuwait Remal Real Estate	0.008	-0.001	-6.17%	0.97	NM	0.00	2	-5.0%	-60.2%	0.01	1.00	-110.3%	-12.4%	0.024	0.007	0.01%
Kuwait Real Estate Holding	0.034	0.000	0.00%	0.64	12.32	0.00	6	0.0%	-35.6%	0.00	0.00	5.1%	1.7%	0.059	0.032	0.01%
Taameer Real Estate Investment	0.024	-0.001	-4.40%	0.38	NM	0.00	5	0.4%	-42.1%	0.01	0.29	-6.5%	-4.9%	0.054	0.018	0.01%
Sanam Real Estate	0.065	0.000	0.00%	0.85	28.88	0.00	8	-0.2%	-18.0%	0.00	0.00	2.9%	2.8%	0.100	0.053	0.02%
Mena Real Estate	0.030	0.000	-1.34%	0.26	NM	0.00	4	2.1%	-41.0%	0.00	0.05	-6.8%	-5.4%	0.098	0.028	0.01%
Al Masaken International Real Estate Developmen	0.027	-0.001	-3.18%	0.44	NM	0.00	3	-3.9%	-37.6%	0.01	0.35	-1.1%	-0.4%	0.059	0.026	0.01%
Real Estate Trade Centers	0.052	0.002	3.79%	0.29	21.76	0.00	7	1.4%	-25.7%	0.08	1.43	1.3%	1.1%	0.123	0.043	0.02%
Land United Real Estate	0.068	0.000	0.00%	0.60	NM	0.00	10	0.0%	-27.6%	0.00	0.00	-4.8%	-1.5%	0.118	0.052	0.02%
Total Real Estate - 34 Companies							2,589			2.56	25.18					5.87%

DAILY MARKET COVERAGE REPORT

NIC MENA SECURITIES - RESEARCH AND STUDIES DEP



Technology	Price			Valuation Multiples			MKT Cap	Price Performance		Trading Indicators		ROE	ROA	52 Week (KD)		MKT Cap
	Close (KD)	Day Δ	Day % Δ	PBV(X)	PE(X)	DY%		Mn KD	MTD(%)	YTD (%)	Value (Mn KD)			(Mn Shrs)	(%)	
Automated Systems	0.087	0.004	4.82%	0.77	NM	0.00	9	3.8%	-7.4%	0.00	0.03	-3.4%	-3.0%	0.116	0.074	0.02%
Total Technology - 1 Companies				0.77	NM	0.0%	9			0.00	0.03	-3.40%	-2.96%			0.02%

Telecom	Price			Valuation Multiples			MKT Cap	Price Performance		Trading Indicators		ROE	ROA	52 Week (KD)		MKT Cap
	Company	Close (KD)	Day Δ	Day % Δ	PBV(X)	PE(X)		DY%	Mn KD	MTD(%)	YTD (%)			Value (Mn KD)	(Mn Shrs)	
Mobile Telecommunications	0.601	0.001	0.17%	2.19	14.20	5.50	2,601	0.3%	1.0%	1.65	2.74	15.6%	4.3%	0.698	0.564	5.90%
Kuwait Telecommunications	0.591	0.001	0.17%	2.55	13.01	5.08	590	0.2%	38.2%	0.21	0.36	20.3%	11.1%	1.189	0.418	1.34%
National Mobile Telecommunications	1.019	0.000	0.00%	0.96	13.22	3.43	511	-0.6%	63.3%	0.02	0.02	7.2%	4.2%	1.280	0.615	1.16%
AAN Digital Services	0.016	0.000	0.00%	0.60	NM	0.00	14	0.0%	-2.4%	0.00	0.00	NM	NM	0.020	0.016	0.03%
Hayat Communications	0.056	-0.002	-3.28%	0.45	NM	0.00	5	-5.1%	-47.2%	0.00	0.01	-0.7%	-0.3%	0.124	0.050	0.01%
Telecom - 5 Companies							3,720			1.88	3.13					8.44%

Utilities	Price			Valuation Multiples			MKT Cap	Price Performance		Trading Indicators		ROE	ROA	52 Week (KD)		MKT Cap
	Company	Close (KD)	Day Δ	Day % Δ	PBV(X)	PE(X)		DY%	Mn KD	MTD(%)	YTD (%)			Value (Mn KD)	(Mn Shrs)	
Shamal Az-Zour Al-Oula Power & Water	0.193	0.000	0.00%	1.79	15.87	9.33	212	0.0%	-15.4%	0.11	0.58	14.8%	2.7%	0.247	0.188	0.48%
Total Utilities - 1 Companies							212			0.11	0.58					0.48%

Total Market 156 Companies				1.94	32.10	4.10	44,082			56.69	213.48					100%
-----------------------------------	--	--	--	-------------	--------------	-------------	---------------	--	--	--------------	---------------	--	--	--	--	-------------

End of Report

The information contained in this document is proprietary to NIC and is for use only by the persons to whom it is issued. This document is confidential and may not be distributed either in part or in whole without the express agreement of NIC. It is intended solely for the use of the individual or entity to whom it is addressed and others authorized to receive it.

Note : ROE and ROA is calculated based on LFY net profit & shareholders' equity and LFY Operating Profits & Total Assets

Sources : National Investments Company Research and Studies Departments, Boursa, Refinitiv.



شركة الاستثمار الوطنية
NATIONAL INVESTMENTS COMPANY

Sharq, Al Mutanabi Street, Khaleejia Tower | P.O. Box 25667, Safat 13117, Kuwait

T.: +965 2226 6666 | Fax: +965 2226 6793 | www.nic.com.kw